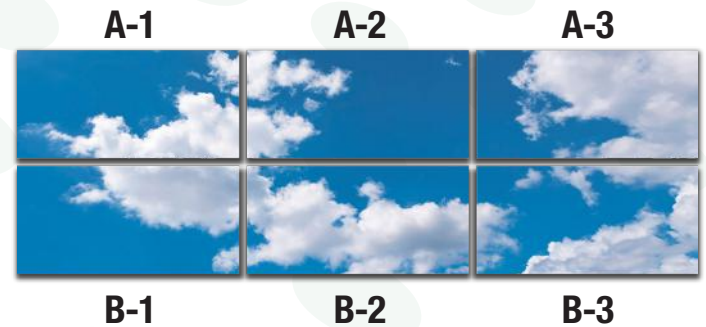


LED Cloud Panel Lights

Indoor Standard 2'x4'



Pattern Selection



Features

- 110 Lumens Per Watt
- Super thin, super light, and super bright.
- Instant on with no gradual warm-up.
- Lightweight aluminum frame.
- Recessed, surface-mounted and suspension installation.
- Dimmable.

Input Voltage

- 100-277V AC.
- 480V AC Optional.

Advantage

- No UV or IR in the Beam.
- Easy to Install and Operate.
- Energy Saving, Long Lifespan.
- Instant Start, NO Flickering, NO Humming.
- Green and Eco-Friendly without Mercury.
- Lifespan: 50,000 Hours.

Recommended Use

- Business Offices.
- Department Stores.
- Conference Rooms.
- Home Basements.



LED Cloud Panel Lights

Indoor Standard 2'x4'

PRODUCT	
PRODUCT NAME	LED Cloud Panel 2'x4'
SKU #	151096
MODEL #	BLT24P50W5KSKY
COLOR TEMPERATURE	5000K

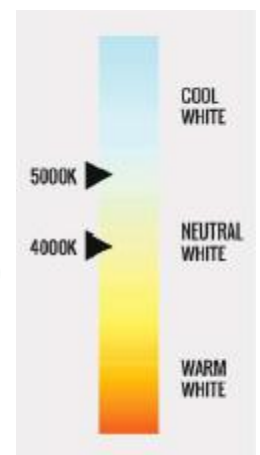
SPECIFICATIONS	
LUMENS	2900Lm
CONSUMPTION	50W
VIEWING ANGLE	Varies Based on Cloud (150°)
INPUT VOLTAGE	100 - 277V AC
POWER FACTOR	>0.90

FIXTURE SPECIFICATIONS	
LED BRAND	SMD 2835
HOUSING	Aluminum
HOUSING COLOR	White
COVER	Acrylic

APPLICATION	CRI	BEAM ANGLE	DIMMABLE
Indoor	>80	Varies (150°)	Yes (0 ~ 10V)

WARRANTY	ETL LISTED	DLC LISTED
5-Year	Yes	Yes

Correlated Color Temperature (CCT)



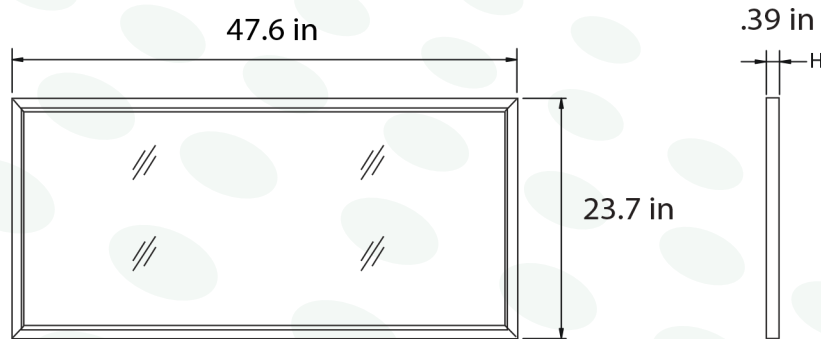
Due to continuous product improvement, information on this document is subject to change. Last revision date: 5/2/2019.



LED Cloud Panel Lights

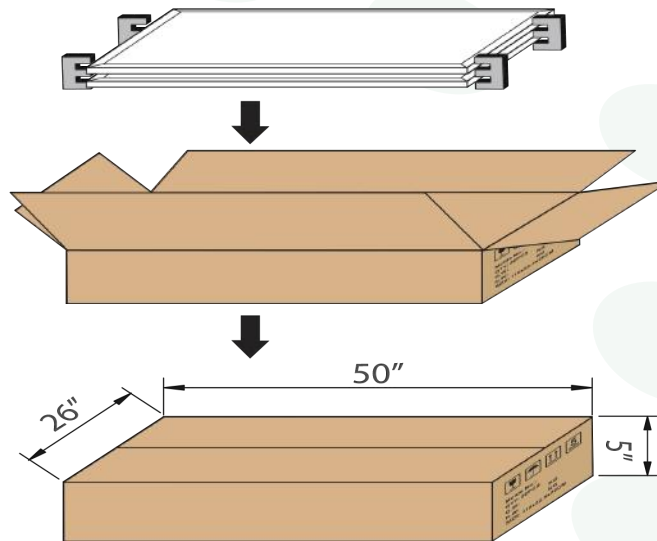
Indoor Standard 2'x4'

Drawing



Package

Lamps Net Weight	Size	Qty/Carton	Weight/Carton
24lbs	47.6" x 23.7" x 2.5"	2	41.9lbs



Notice For User

- Please turn off power before installation or changing assembly parts.
- The input voltage and lamps should be matched after connecting the power line.
- Please make sure the wiring section is insulated.
- Licensed Electrician Installation ONLY.

Due to continuous product improvement, information on this document is subject to change. Last revision date: 5/2/2019.

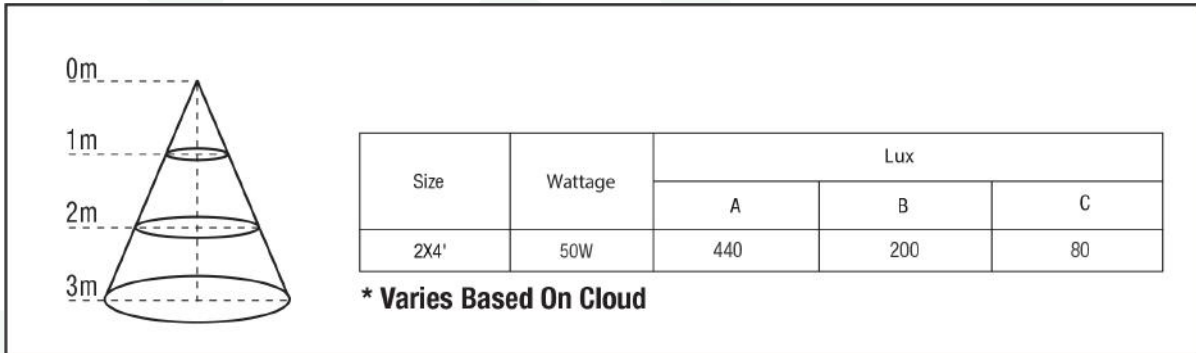


LED Cloud Panel Lights

Indoor Standard 2'x4'

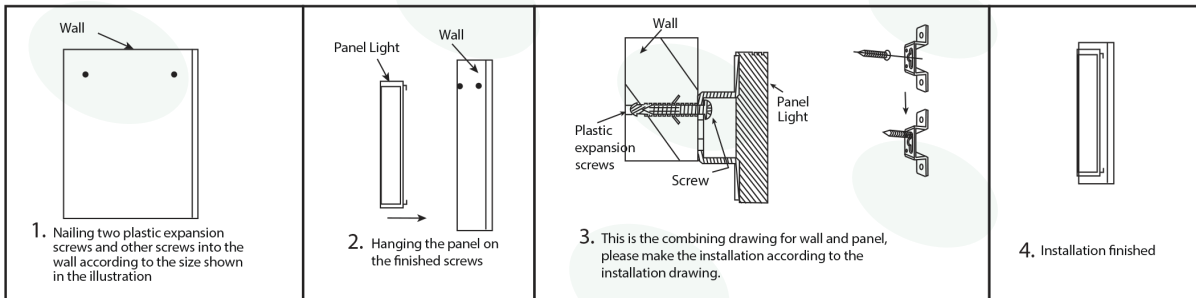
Light Distribution Testing Parameters

Lux Chart

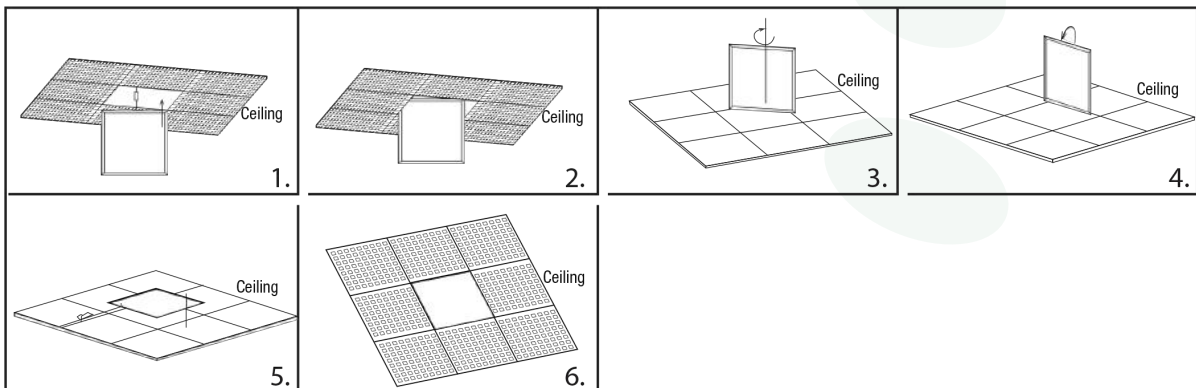


Installation

Wall Mount



Recessed Mount



Due to continuous product improvement, information on this document is subject to change. Last revision date: 5/2/2019.

